

# IRVMIREN



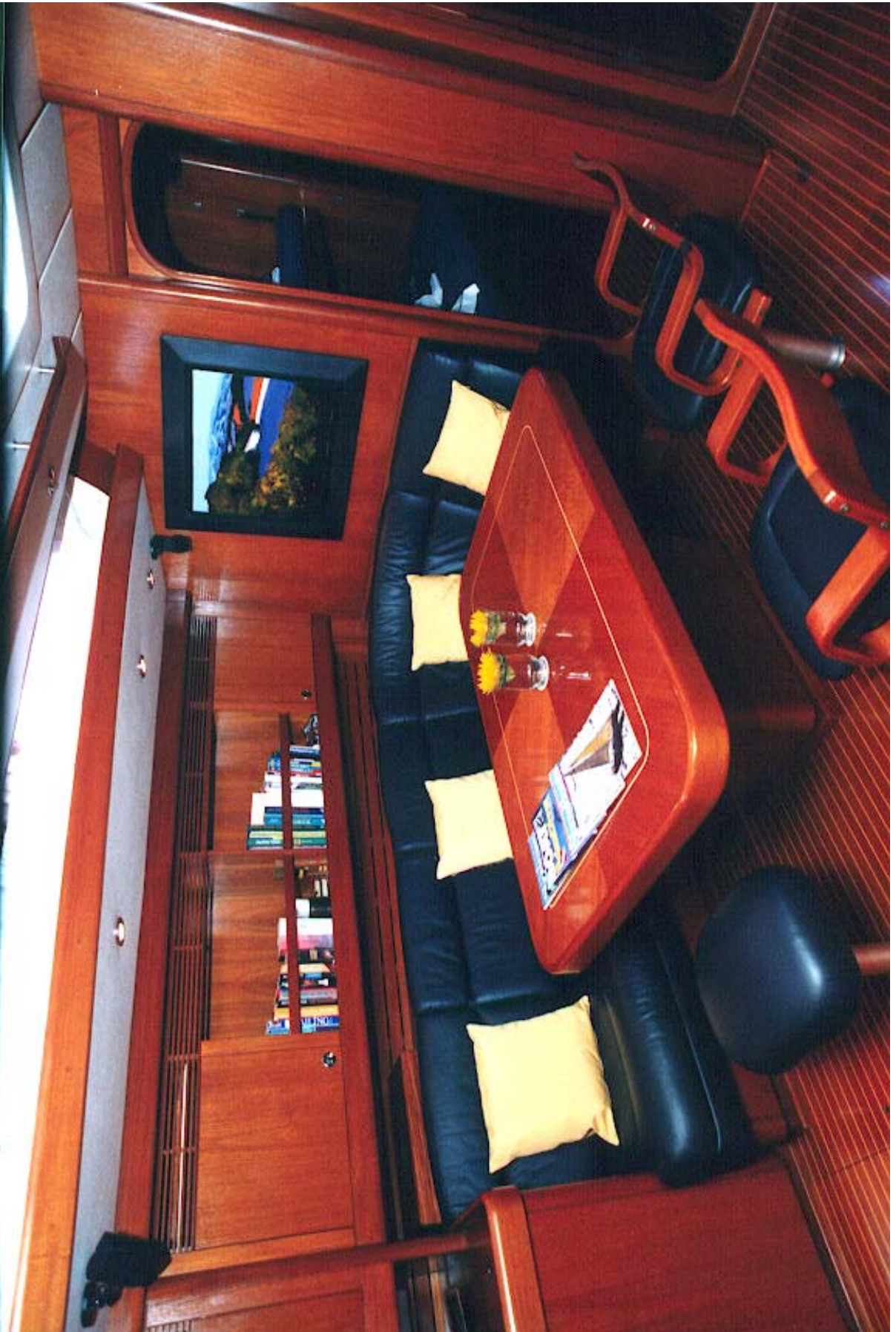
**SWAN68**





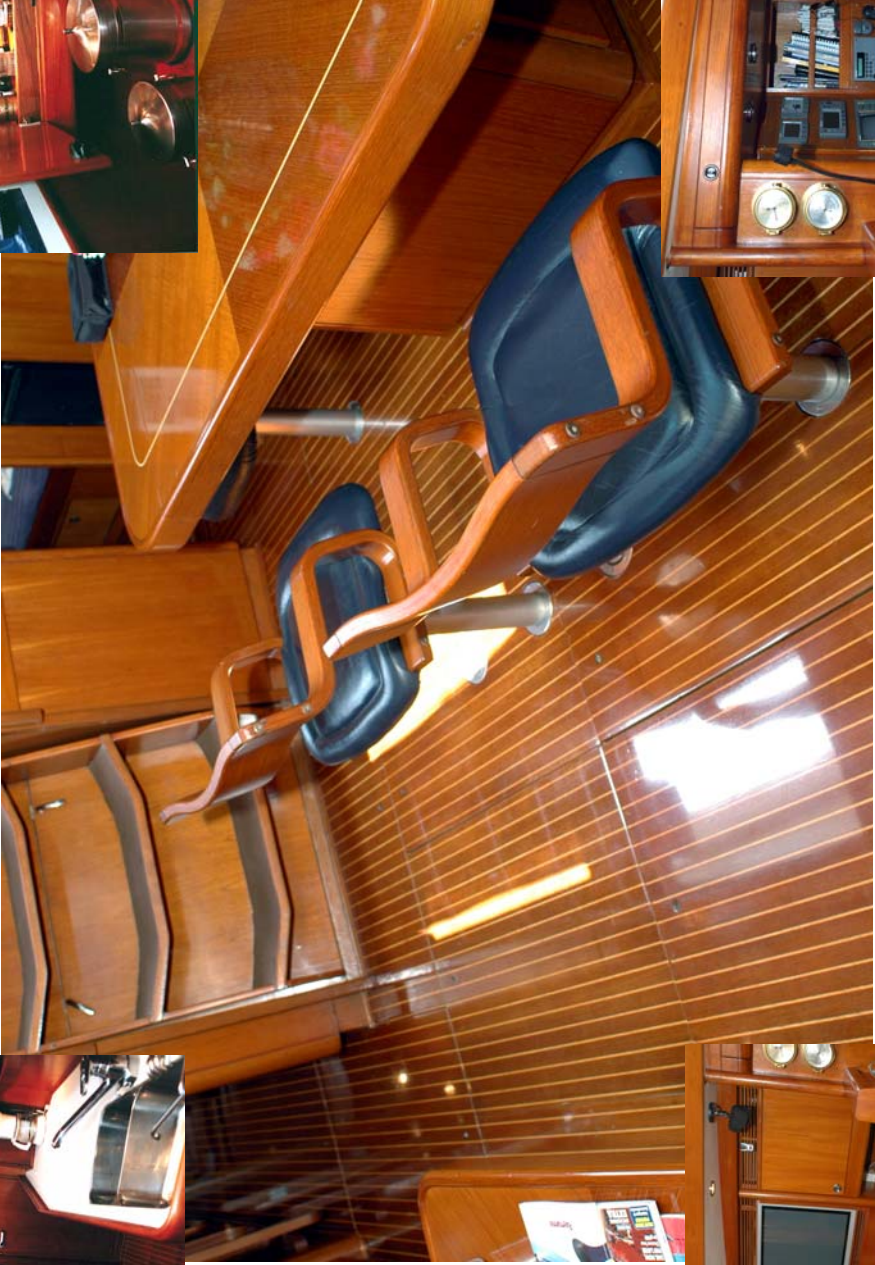
THE DECK

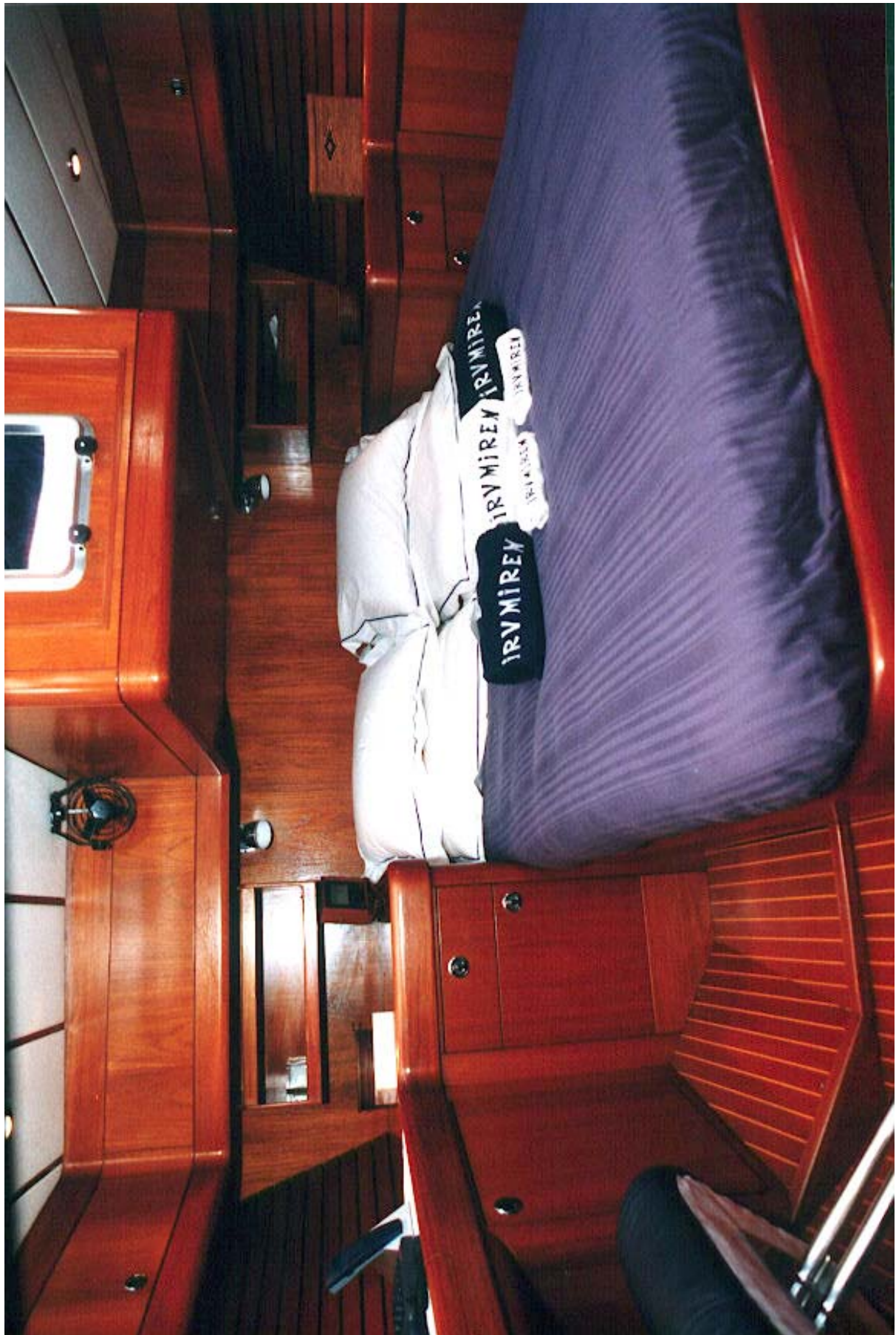




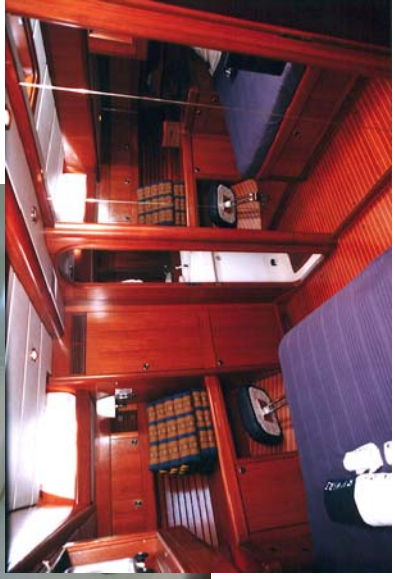


THE SALOON



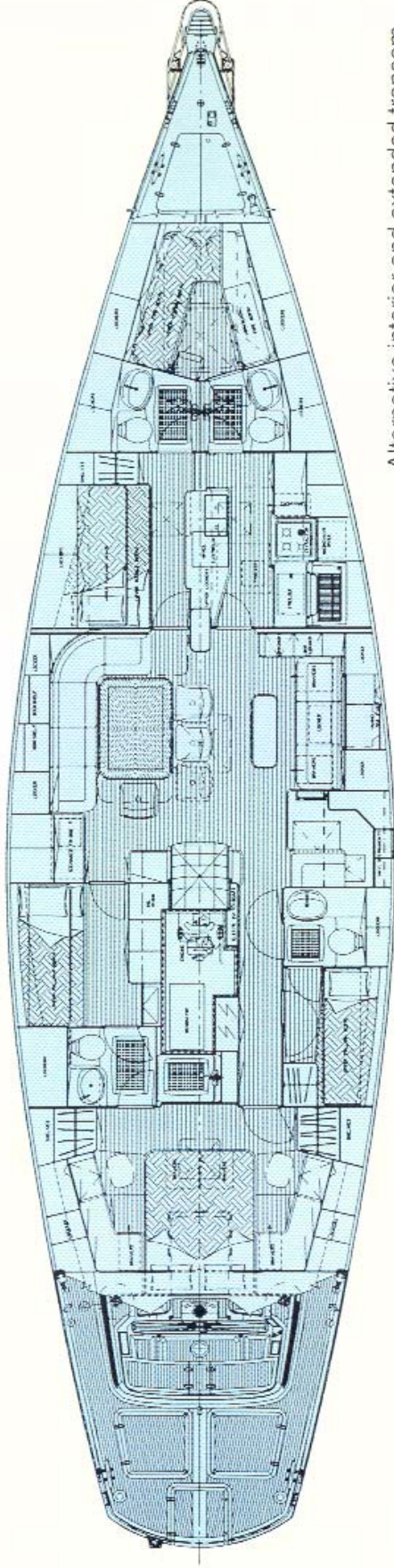


CABINS, TOILETS, SHOWERS



## INTERIOR LAY-OUT

Showing the large owner's stateroom aft with his and hers work space on port and starboard and a toilet and shower stall en-suite that is shared with the spacious guest cabin on port side aft . Another large guest cabin on port side fwd with a toilet/shower en-suite. On stb side aft is the skippers cabin or another guest cabin with direct access to the toilet/shower, which is also used as a guest day toilet. Very spacious saloon with a large dining table on prt, which can be extended to a buffet table. The large and well equipped galley is forward on stb side with direct access from the crew quarters through the toilet/shower. Crew quarters and workbench in the fore peak. Large storage space aft in the lazarette.



Alternative interior and extended transom

## SHORT SPECIFICATIONS

Builder	Oy Nautor AB, Finland	GPS	Raymarine RN-300	Sails	
Designer	German Frers	Radar	Raytheon 41 XX	Cruising Main	Fully battened Dacron
Year Built	1993	Chart Plotter	Eaymarine HSB	Cruising Genoa	130% Furling Dacron
Length overall	70 ft	Sailing instruments	Raymarine	Cruising spinnaker	Asymmetric
Beam	18 ft	Autopilot	Raymarine ST 7000	Racing Main	Kevlar, Quantum
Draught (loaded)	12 ft	VHF	Raytheon Ray 54E	# 1 light/medium	3 DL, Quantum
Displacement	40000 kg	VHF handheld	Motorola GP 338	# 1 medium/heavy	Kevlar, Quantum
Ballast	16000 kg	SSB	Icom M 700 PRO	# 3 blade	North Sails
Mainsail	1000 sqft	Satcom M	ABB-Nera	Spinnaker 0.50	North Sails
Genoa	1800 sqft	TV screen/monitor	Panasonic 40"	Spinnaker 0.75	Quantum
Spinnaker	4200 sqft	Video	DVD player Avita	Spinnaker 1.50	North Sails
Fuel	1900 ltr	Audio	Bose Lifestyle, 2 zones	Asymmetric 0.75	Quantum
Water	1170 ltr	Hydraulics		Asymmetric 1.5	Quantum
Range under power (8 knots)	1800 nm	Navtec	Backstay, Babystay, Vang, Innerforestay, Radar, Mast jack	Anchoring	
Maximum engine speed	9.8 knots	Headsail furler	Reckmann	Anchor windlass	Lewmar 3000
Main engine	Perkins 225 HP	Anchorwindlass	Lewmar 3000	Chain	80 m
Generator	Fisher Panda 18 Kva	Harken powerpack	69	Miscellaneous	
Air-conditioning	Cruisair 57000 BTU	Swimming platform	Hydraulic	Tender	Avon 12ft RIB
Watermaker	Pureflex FP 800	Rig		Outboard	Yamaha 25 hp
Toploading freezer	140 ltr	Mast	Aluminum	Dive compressor	Bauer Junior II
Front loading fridge	240 ltr	Spinnaker pole	Aluminum	Dive tanks	Aluminum 12 ltr
Extra freezer	100 ltr	Spinnaker pole	Carbon Fibre	Liferaft	Hard pack 8 men
Extra drinks fridge	100 ltr	Jockey pole	Aluminum	Awnings	
Icemaker	U-line, 23 lbs/day	Standing rigging	Navtec rod	Full boat length covers, Bimini, Dodgers	
Microwave oven	Panasonic				

The above information has been obtained from various sources and is believed to be correct at the time of printing however this cannot be guaranteed and no party accepts any liability for its accuracy, errors or omissions



